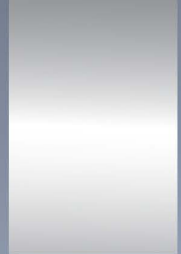


BLUEVISION

**AI-BASED
NAVIGATION
ASSISTANT**



BLUEVISION

BlueVision is an AI-based solution designed to provide navigation support for marine platforms both day and night. It uses visual data to detect, classify, and track surface objects, predicting their instantaneous distances and determining their geographic coordinates. This advanced technology enables accurate navigation in port environments, enhancing situational awareness through precise object recognition and location tracking.

By ensuring safe navigation at all times, BlueVision allows for more operations to be conducted, significantly improving the safety and operational efficiency of marine platforms and enabling ships to navigate safely at any hour of the day.

VIDEO ANALYSIS AND SITUATIONAL AWARENESS CAPABILITIES

- Object Detection
- Object Classification
- Object Tracking
- Optical Angle Detection
- Distance Estimation (yards)
- Categorical Distance Detection (close/mid/far)
- Coordinate Estimation
- Real-Time Two-Dimensional Obstacle Map

OTHER FEATURES

- User-Friendly Web/Desktop Interface
- Processed Video Streaming and Recording
- Adaptable Object Detection Model
- Selectable Object Detection Model
- Integrated API with External Software

RECOMMENDED CAMERA FEATURES

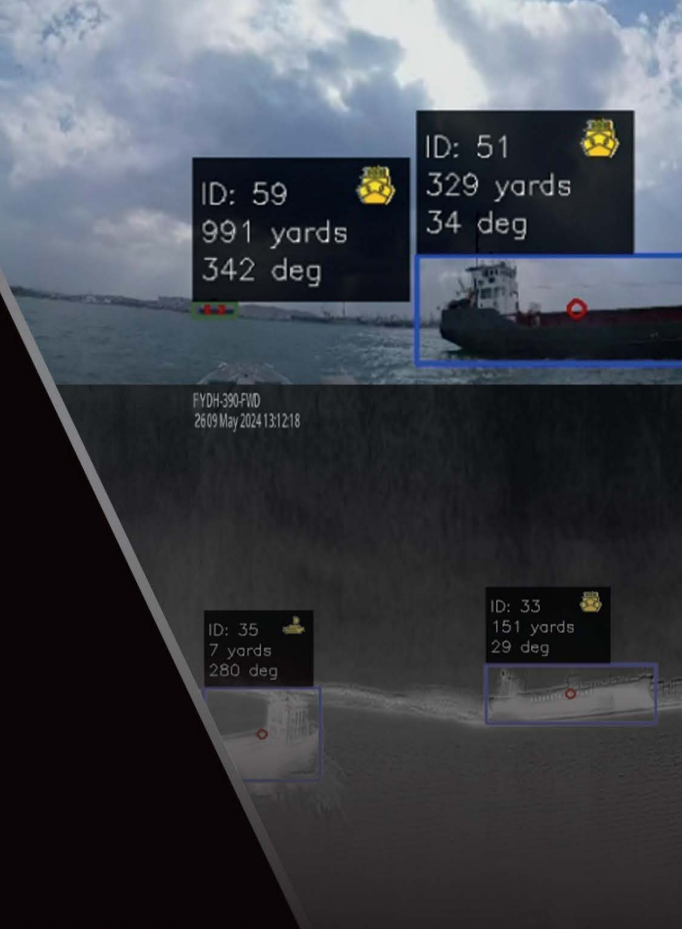
Day Camera

- Dimensions (mm): 215 x 86 x 80
- Weight: 590 g
- Environmental Ratings: IP67, IK7
- Power Source: PoE (802.3af)
- Power Consumption: 8W / 12W
- Operating Temperatures: -40°C ~ +50°C (-40°F ~ +122°F)
- HFOV: 36° - 103°
- Resolution: 2560 x 1440 (1440p)
- FPS: 25/30 fps

Thermal Camera

- Dimensions (mm): 156x171
- Weight: 1700 g
- Environmental Ratings: IP66
- Power Source: PoE (802.3af, Type 1, Class 3)
- Power Consumption: 4.2W
- Operating Temperatures: -40 ~ +40°C
- HFOV: 57°
- Resolution: 960 x 360 VividIR
- FPS: 30

**The above configuration is recommended for a system operating with 4 cameras and in daylight conditions. The system metrics may vary depending on sea conditions and camera positions.



AI PROCESSING UNIT

- 1 Unit NVIDIA GPU - 16+ GB VRAM
- 1 Unit 12+ Core Intel 12th Gen CPU
- 1 TB Storage

OBJECT CLASSIFICATIONS AND DETECTION DISTANCES

- Small-sized objects (approximately up to 150 meters)
- Small-sized vessels (approximately up to 700 meters)
- Medium-sized vessels (approximately up to 1500 meters)
- Large-sized vessels (approximately up to the Horizon)