

# dataplato

Business Intelligence

HAVELSAN



## What is Data Plato?

Plato is a next-generation business intelligence platform that enables business intelligence users to extract, analyze, visualize, and share data from source systems without requiring any technical expertise

### Easy to Use

The reporting system of Data Plato allows business units to engage in self-service report generation and visual data analysis through intuitive drag-and-drop interfaces, without the need for writing code or SQL queries.

### Integration

The reporting system can be integrated with existing applications or reporting portals as needed. This allows for seamless data exchange and an integrated reporting experience.

### Security

In the reporting system, authorization can be applied at the object level (data models, dashboards, data connections), row level, or user/group level. This ensures that access to specific data is controlled and restricted as necessary.

### Performance


The reporting system, built on a microservices architecture, is designed to effectively handle increasing user loads. This ensures high performance and efficiency even with growing demands.

### Which Database Systems Does it Work With?


The reporting environment of Data Plato allows for reporting on data from the following database management systems:

- PostgreSQL
- Oracle
- Microsoft SQL Server
- ClickHouse
- Sybase
- MySQL

## Product Features

 The reporting environment enables the creation and viewing of reports independently of the operating system.

 It has the ability to drill down into the hierarchy by clicking on a field in reporting objects.

 Drill-through links can be established between reports, allowing users to select data in one report and navigate to another report that uses that data as a parameter.

 Users can create new calculated fields using existing data sets.


 When the reporting system is used within different systems, it can retrieve user information through the SSO (Single Sign-On) feature.

 The created reports can be viewed from mobile devices and web browsers.

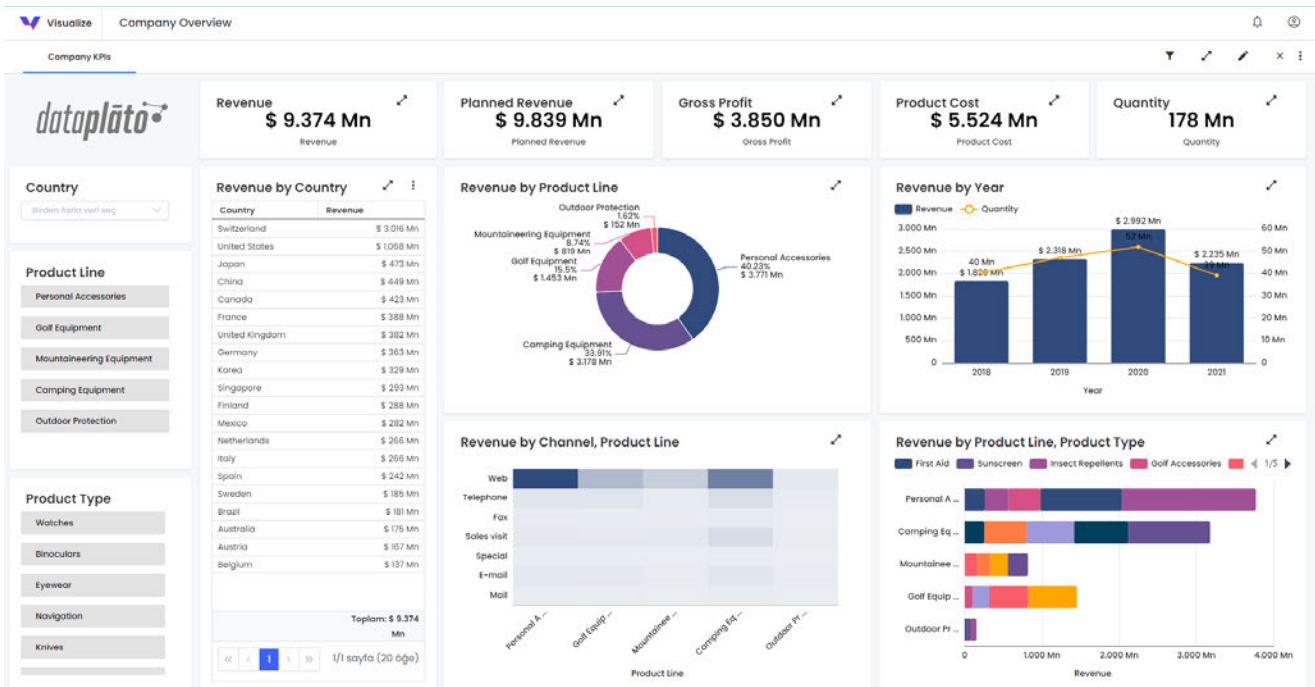
 Users can easily find content within the reporting system using a search bar.

 Data or report views can be exported in Excel, CSV, and PDF formats.

 The reporting environment can perform queries without the need for any Applet/ActiveX through a web browser (e.g., Chrome, Firefox, Safari, Edge).

 The relevant self-service component enables data visualization through a web interface without the need for coding, using a drag-and-drop approach.

 The data model enables users to import files in MS Excel and CSV formats from their own computers to develop reports.



## Value Proposition

Users can easily design their own reports and dashboards without requiring any coding knowledge using the drag-and-drop method, and they can use the product through a web browser without the need for any additional applications or plugins.

Users with a basic understanding of data science can obtain high-performance prediction products with just a few clicks, reducing model training times by up to 500% and saving time that would otherwise be lost in comparing the resulting outcomes.

Analyzing the developed models in the visualization interface enables detailed analysis and allows you to be data-driven in creating operational and corporate strategies.

Sharing the generated content and results within the organization, including user or group-based authorizations, contributes to the establishment of a collaborative working environment.

Since the new versions and features of the product are automatically installed, users do not need to make any additional effort. Users can apply corporate colors and fonts to all objects at once by selecting predefined templates for their display preferences.

## Technical Specifications

Operating System: Linux (Recommended): Ubuntu 22.04 - RedHat 8

Additional Software: Docker 19.04+ and Docker-Compose

Minimum CPU (Core): 8 Development / Live

Minimum RAM (GB): 32 Development / Live

Minimum Disk (TB): 0,5 Development / Live



**dataplato**

WWW.DATAPLATO.WORKS



WWW.HAVELSAN.com.tr

