



Windows • Linux • Pardus



What is Liman?

LIMAN is a management system that enables central management of all components in Information Technologies (IT) processes with remote, stable, secure and expandable methods.

Modular Structure

Access any Add-on Features that is customized according to your needs through to the modular structure.

Policy Management Add-on Features

- Policy management on your Linux-based systems with more than 1000 policy objects.
- Assign your policies to users, devices, user groups, organizational units and domains in your site structure.

Domain Management Add-on Features

- Management of the different auditors (MS Active Directory and SAMBA) in your domain are centralized remotely via web interface.
- Manage devices.
- Add, edit and delete your users, groups and organizational units.
- Remotely add GNU/Linux devices to your domain.

Inventory and Network Discovery Add-on Features

- Discover your active assets in your organization and create your automatic inventory list.
- Detect the IP and MAC anomalies of the assets in your inventor
- Detect open port changes of the assets in your inventory.

Network Monitoring Add-on Features

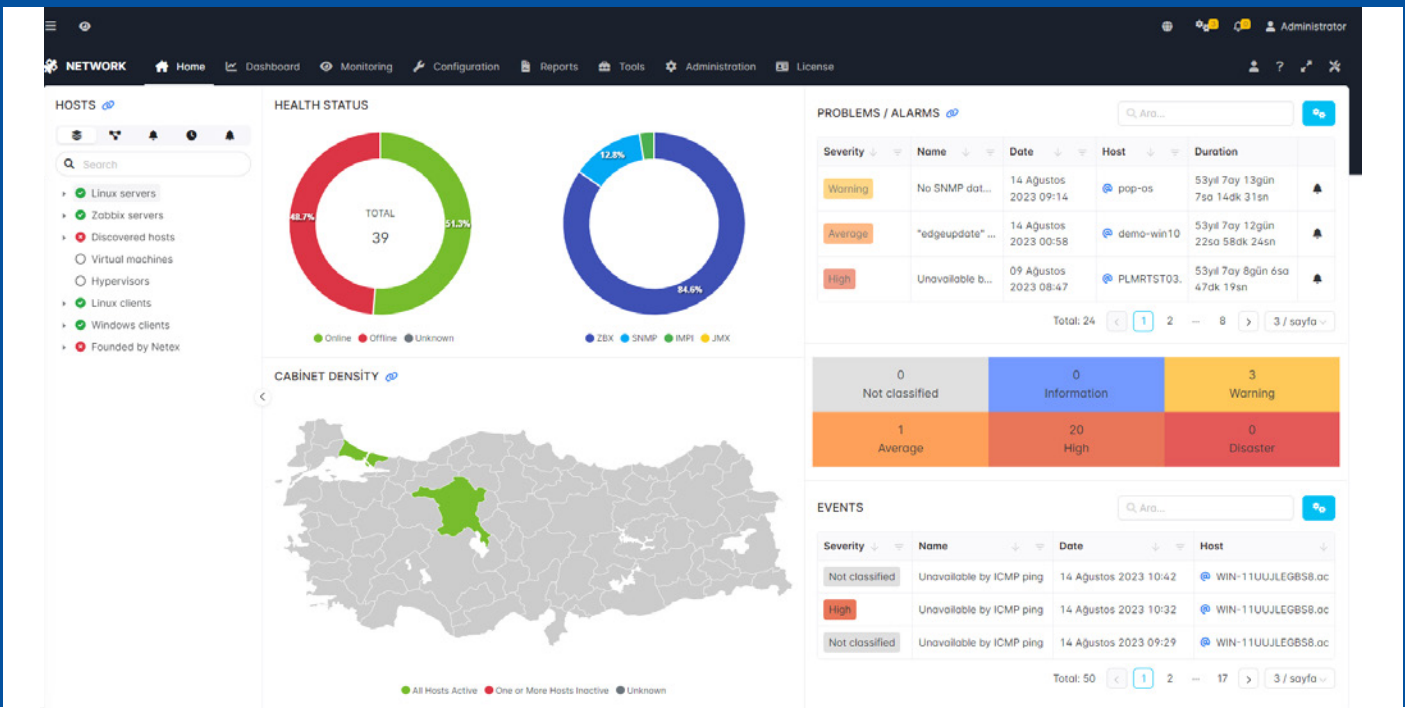
- HMonitor the health status and accessibility of your devices on the network in real time without the need to install any agents.
- Proactively monitor your network and create alarms based on thresholds you define.
- Analyze bandwidth consumption by identifying anomalies that may occur in traffic along with abnormal density on the network interface and plan future bandwidth needs accordingly.

Device Management Add-on Features

- Send tasks to your domain or non-domain Windows and Linux devices.
- View your software and hardware inventory information.
- Do your package and patch management.
- Manage your devices more easily with static and dynamic collections.

Data Security Policies Management Add-on Features

- With Bariyer agent, prevent corporate data containing sensitive information from being taken out of the institution without permission.
- Manage and distribute the Bariyer agent with Liman.
- Ensure information security by preventing data leakage with the determined prevention rules.
- Check whether data is accessed only by authorized users.



Value Propositions

Effective and Efficient Processes: Manage your organization's IT services more effectively and efficiently.

Single Point Management: Manage all IT services from a single center. Hence, you can easily view and manage service requests, updates, reports and performance metrics.

Proactive Problem Solving: Identify problems that need to be fixed before they occur, and proactively solve problems that do not interrupt business processes.

Customer-focused: Customize our user-friendly interface in a flexible way for your needs.

Efficient Reporting and Monitoring: With detailed reporting features, you can continuously monitor your performance data and metrics in your IT services, identify areas of improvement and make data-oriented decisions.

Scalability: Provides a scalable solution to manage the entire system or specific sets of hardware and users individually or collectively. It provides the flexibility needed to manage increasing demands and number of assets as your organization grows.

Training and Support: Use your product more effectively and manage your processes with training and support packages.

Easy to Use: Improve your experience with user-friendly interfaces customized according your needs.

Low-Cost: Save expenses in your organization by optimizing processes and increasing efficiency.

Performance: Monitor and manage your IT services with low resource consumption and network traffic that does not exhaust your system.

Security Role Management: You can authorize the functions in the management interface to user and user groups according to the role definitions you specify.

Detailed Log Tracking: Transactions applied in the system are logged and recorded in detail. Log records can be directed to SIEM products and log management systems.

Minimum System Requirements

- Operating System: Linux (Recommended): Ubuntu 22.04, RedHat 8
- Minimum CPU (Core): 2 Live
- Minimum RAM (GB): 4 Live
- Minimum Disk (GB): 100 Live

Add-ons

- Domain Management
- Policies Management
- Device Management
- Network Monitoring
- Inventory and Network Discovery
- Data Security Policies Management



 **Liman**

WWW.LIMAN.WORKS

