

# EYEMINER

## IoT



## What is Eyeminer IoT?

Eyeminer IoT is an Internet of Things platform that enables the centralization, visualization, analysis, remote management, and reporting of data obtained through field-deployed sensors and/or devices. With its advanced technologies, Eyeminer IoT provides a secure, time and cost-effective platform for process optimizations and new business models.

### Highlights

#### Easy Integration

Eyeminer IoT enables the management of assets and business applications with various communication protocols through a single platform.

#### User-Friendly Web Interface

Eyeminer IoT enables the visualization of data collected from the field through a user-friendly graphical interface. It enables remote control of data collected from the field and centralized data management through the rule engine.

#### Horizontally Scalable Architecture

Server capacity selection can be made according to the user needs.

#### Role-Based Management

Eyeminer IoT facilitates the creation of different user workflows by providing role-based access.

#### Authorization

Eyeminer IoT provides an authorization infrastructure for user login.

#### Logging

Eyeminer IoT ensures that all user actions and system activities are logged.

#### Fault-Tolerant Structure

Prevents data loss through its redundant structure in a cloud environment.

#### Continuous Support

Ensures 24/7 uninterrupted server operation due to its redundant architecture.

## Product Features

### Data Collection

Enables data collection from different types and numbers of devices.

### Real-Time Data Tracking

Eyeminer IoT allows for the monitoring of real-time or historical data.

### Customizable Dashboards

Eyeminer IoT facilitates the visualization of real-time or historical data through customizable dashboards.

### Data Reporting

Eyeminer IoT ensures that real-time or historical data can be reported and analyzed. Advanced reports can be generated with rich dashboard tools and data analysis modules.

### Task Management

Through the Rule Engine, Eyeminer IoT enables operations such as record tracking, task creation, assignment, and closure.

### Device Management

Eyeminer IoT provides capabilities for adding, removing, authorizing, and monitoring devices within the ecosystem.

## Areas of Use

### Integrated Security Management

Integrated security management for critical facilities, pipelines, and similar elements.

### Smart Secure Cities

Core infrastructure and functionalities for various applications under the Smart and Secure City concept.

### Smart Energy Management

Energy management and optimization through monitoring energy consumption with smart meters, remote management of meters, loss and theft analysis, and future consumption predictions.

### Smart Agriculture

Monitoring of key sensor data to increase productivity and automation of agricultural processes.

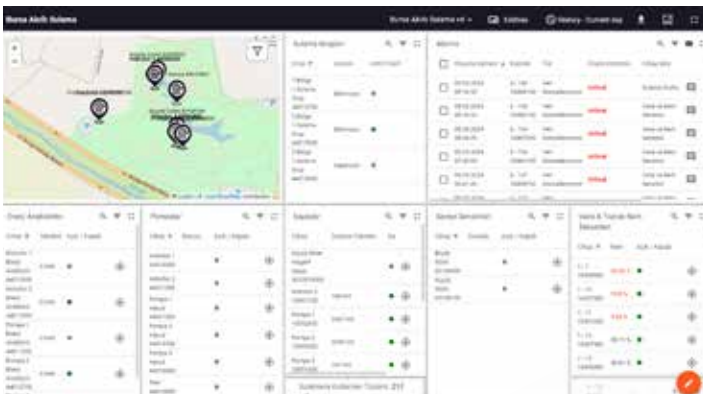
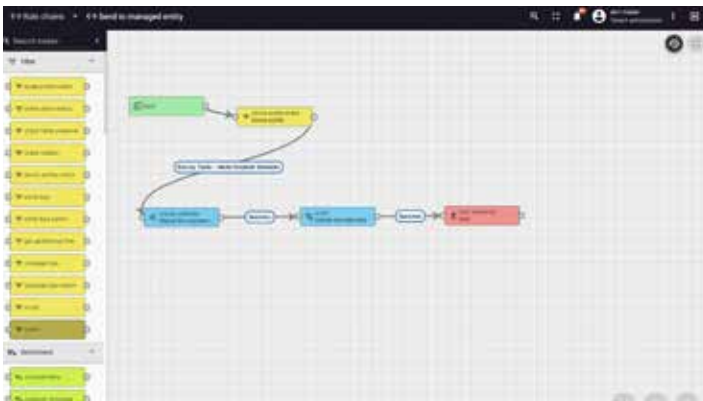
# EYEMINER

# HAVELSAN



## Technical Specifications

- Easily scalable with microservices architecture
- On-premises or cloud installation
- Support for MQTT, COAP, HTTP, and LWM2M protocols
- API support for connectivity to third-party applications
- TLS 1.2 & above security support for Data Transmission Layer Security
- High availability rate
- Allowing independent operation of different tenants via multi-tenant support



# EYEMINER

WWW.EYEMINER.WORKS

